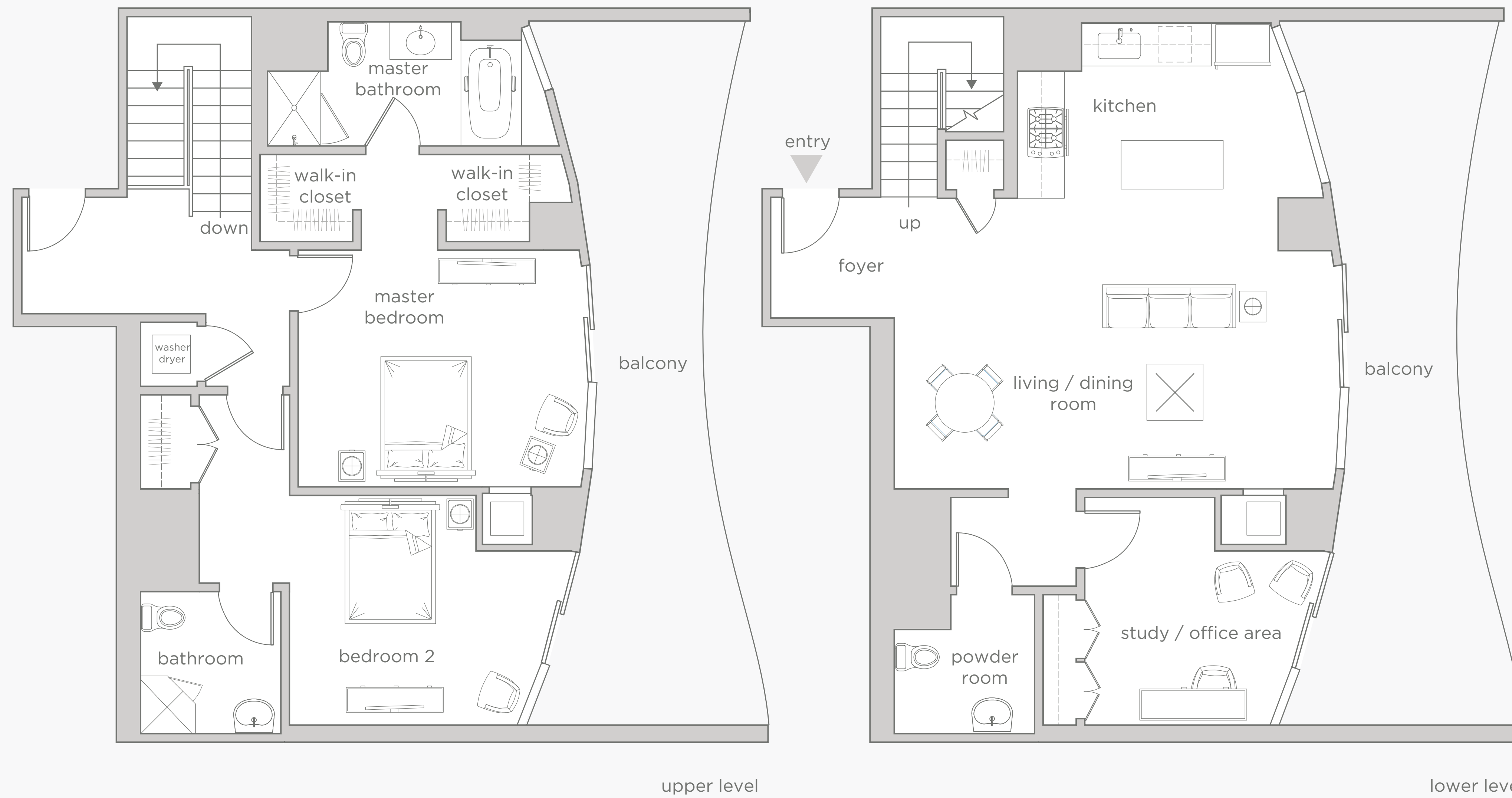


338 SPEAR STREET
RESIDENCE 2L
 floors 31-42

INTERIOR SPACE APPROX. 1684 SQ. FT. / 156.45 SQ. M.

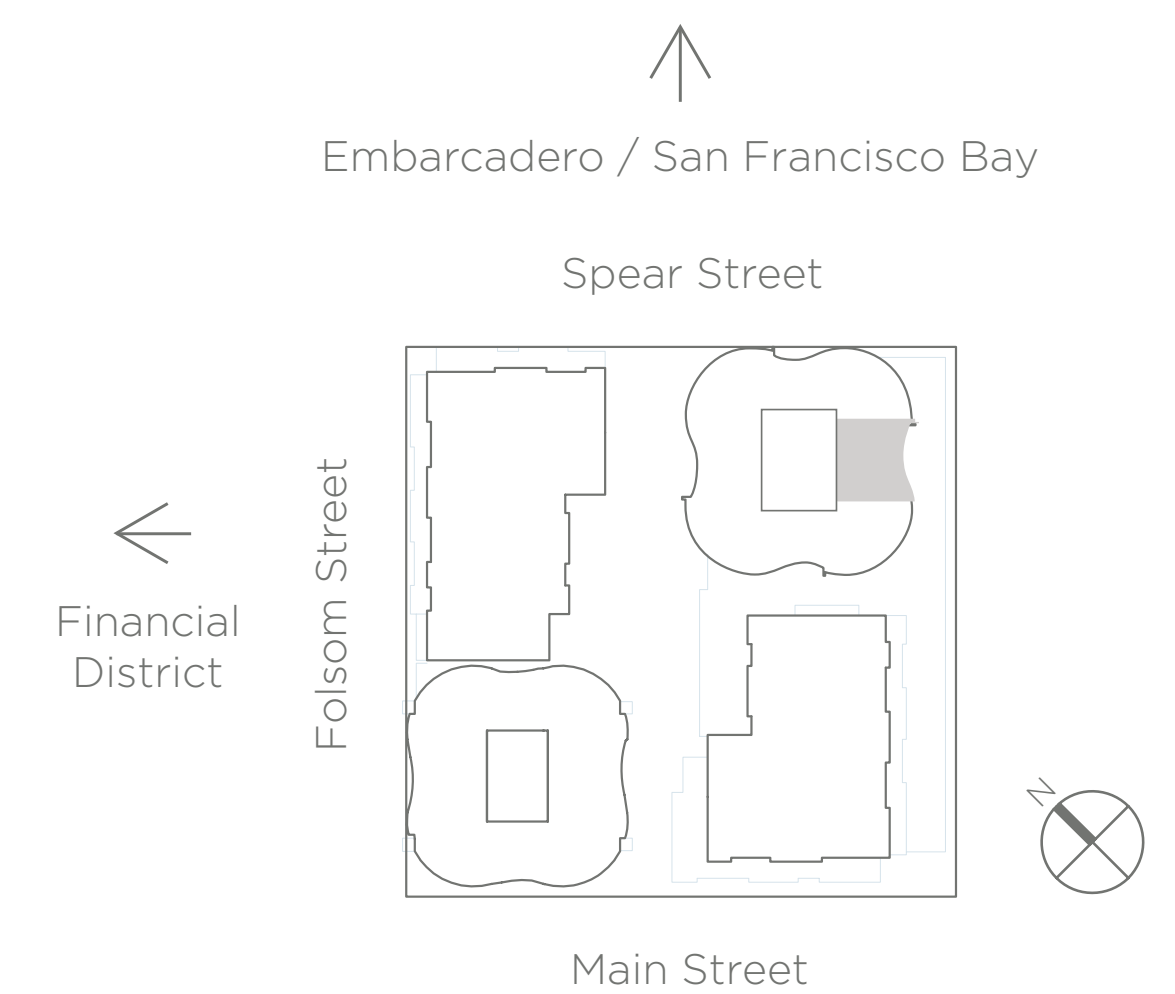


Residence Features

- Foyer entrance
- Two bedrooms
- Two bathrooms
- Powder room
- Living / Dining room
- Kitchen with granite countertops
- Studio Becker cabinets
- Poggenpohl cabinets (levels 37-42)
- Viking cooktop
- Thermador refrigerator
- Private master bedroom suite with two walk-in closets
- Master bathroom with tub and separate shower
- Walk-in closet
- Study / Office area
- Bosch Washer / Dryer
- 9' ceilings in living room & bedrooms
- 11' ceilings at level 42
- Expansive windows
- Two ipe hardwood balconies

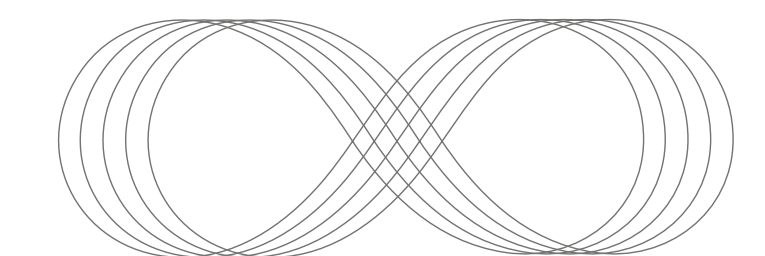
Building Amenities

- 24-hour attended lobby
- Concierge
- 75 ft. lap pool
- 5,000 sq. ft. fitness center
- Treatment room and saunas
- Club lounge with catering kitchen
- Private screening room
- Business center
- Deeded parking
- Landscaped courtyard
- Elegant new restaurant by award winning San Francisco chef



300 Spear Realty Venture, LLC. Exclusively represented by The Mark Company, Sales and Design Center 160 Folsom Street, San Francisco, CA 94105 t 415 512 7700 f 415 512 7711 www.the-infinity.com. This is not an offer to sell, but is intended for information only. Each unit in the building is unique and may have some characteristics, dimensions and ceiling heights that vary from what is shown in these materials. For the details of a particular unit, please inquire at the Sales Center at 160 Folsom Street. The developer reserves the right to make modifications in materials, specifications, plans, scheduling and delivery of the homes without notice. Investment opportunities are limited.

Scale of plan = One unit = 1'-0"



THE INFINITY
 SAN FRANCISCO